

LUCY FLOWER PARK RENOVATION PROJECT



Below are some of the most commonly asked questions about the proposed Lucy Flower Park renovation project. If you have additional questions, please email the Maplewood & Lucy Flower Park Advisory Council at westbucktownparks@yahoo.com.

What age group is the new playground equipment geared toward?

Children of all ages will be able to enjoy the new park! The aging and unsafe equipment is being replaced with a new play structure with ladders and slides for 2- to 5-year-olds, plus a separate, more challenging climbing structure for the 5- to 12-year-old set. There will also be 2 toddler swings, 3 belt swings, and an ADA-compliant swing.



So...the wood chips are going away?

Yes. In their place we'll have a state-of-the-art rubberized surface that meets all the latest safety standards for new playgrounds.

Will we still have mature trees, or will they be taken down during construction?

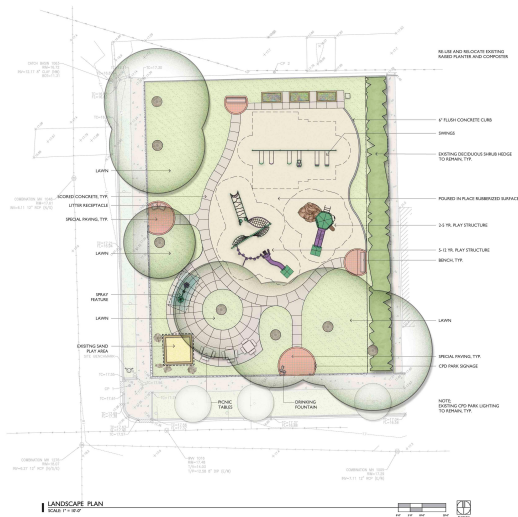
Two aging trees will be removed — but only because they are part of the city's efforts to contain the rampant Emerald Ash Borer infestation. The Park District has assured us that they will preserve all remaining trees in the park. The existing shrub hedge along the eastern border of the park is also staying put. So no worries...you'll still enjoy plenty of cooling summertime shade at Lucy Flower.

What about the raised gardening beds and sandbox?

They are staying! We worked hard to get these community-owned features in the park. The Park District will either work around them during construction, or dismantle and reinstall upon completion.

What kind of water feature are we getting?

We're still waiting for a photo to share, but we're told it's a flower-shaped nozzle with a spray feature that functions much like a large shower head. To turn on the water, kids will simply need to step on a sensor that is built into the ground — the water will turn off automatically after 5 to 8 minutes. The water feature will typically be activated between Memorial Day and Labor Day.



What type of seating will be available at the park? There will be two 8-foot metal benches along the perimeter of the playground, plus three brand-new picnic tables positioned by the sandbox and water feature.

Will there be grassy areas for the kids to play on? There will be plenty of green space! Much of the park perimeter will be sodded, providing lots of room for playing, lounging around, and picnicking.

Are dogs allowed in Lucy Flower Park?

Per Chicago Park District regulations, dogs are not allowed at Lucy Flower Park, whether or not they're on a leash. That will not change with the renovated park, as our parks are bound by the same rules as ALL city parks, both old and new. The WBNA and Maplewood & Lucy Flower Park Advisory Council recognize that establishing a dog park in West Bucktown is something that many residents want, and we fully support the efforts of a group of concerned neighbors who have organized to make that happen. We look forward to reporting on their progress in the future. (For more information about the group, please email goldberg.naomi@gmail.com.) In the meantime, dog owners are encouraged to visit Maplewood Park, where Park District regulations allow for leashed dogs in areas away from the playground equipment.