

**SITE PLAN**  
SCALE: 1/8"=1'-0"

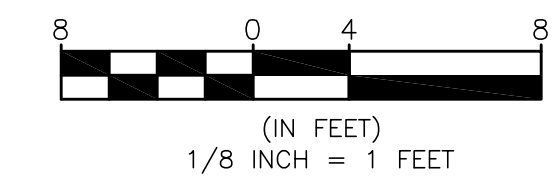
**LEGEND**

- NEW STRUCTURE
- NEW PAVEMENT
- REAR YARD OPEN SPACE
- IRON FENCE
- WOOD FENCE

NEW 3 STORY 4 D.U. MASONRY BUILDING		
	ALLOWED/REQUIRED	PROPOSED BUILDING
ZONING	RT-4	RT-4
LOT AREA	6,000 S.F.	6,000 S.F.
F.A.R.	6,000 x 1.2 = 7,200 S.F.	BASEMENT = 2,324 S.F. (NOT COUNTED) FIRST FLOOR = 2,324 S.F. SECOND FLOOR = 2,324 S.F. THIRD FLOOR = 2,324 S.F. TOTAL = 9,316 S.F.
BUILDING HEIGHT	38'-0"	38'-0"
SETBACKS	FRONT: 15.0' REAR: 48.83' SIDE: TOTAL OF 5.0'	FRONT: 15.0' REAR: 48.83' SIDE: 4.83' (NORTH) 4.83' (SOUTH)
REAR YARD OPEN SPACE	390 S.F.	1,000 S.F.

PUBLIC ASPHALT ALLEY

N. CAMPBELL AVE.



REVISIONS:  
CHECKED BY: F.E.K.  
DRAWN BY: RV

**PROPOSED SITE PLAN**

**1621-27 N. CAMPBELL CHICAGO, IL**

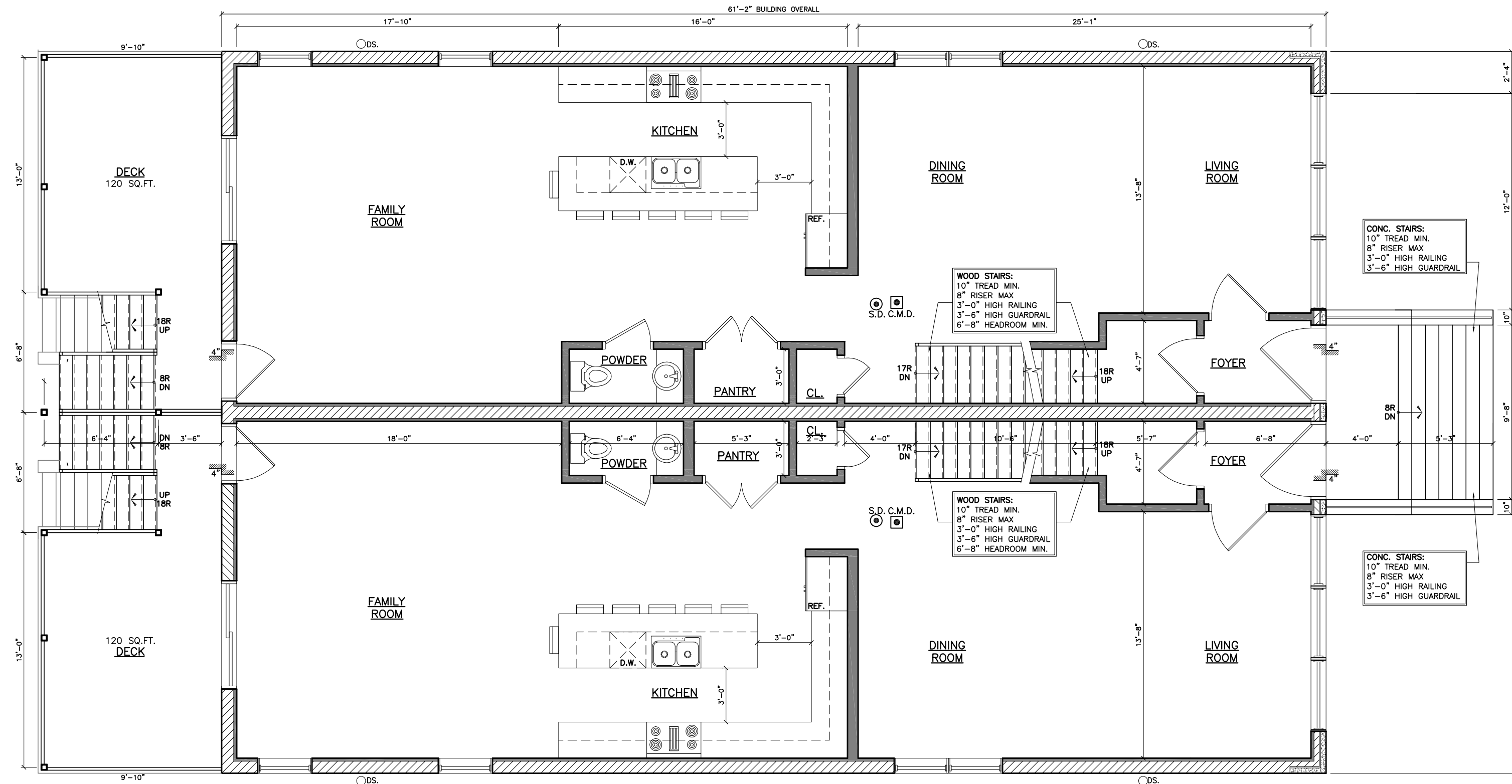
929 N. Damen Ave.  
Chicago IL 60622  
773.772.2756 office  
773.772.2884 fax

ARCHITECTURE  
**RECTS ARCHITECT**  
PLANNING  
ARCHITECTURAL ENGINEERING

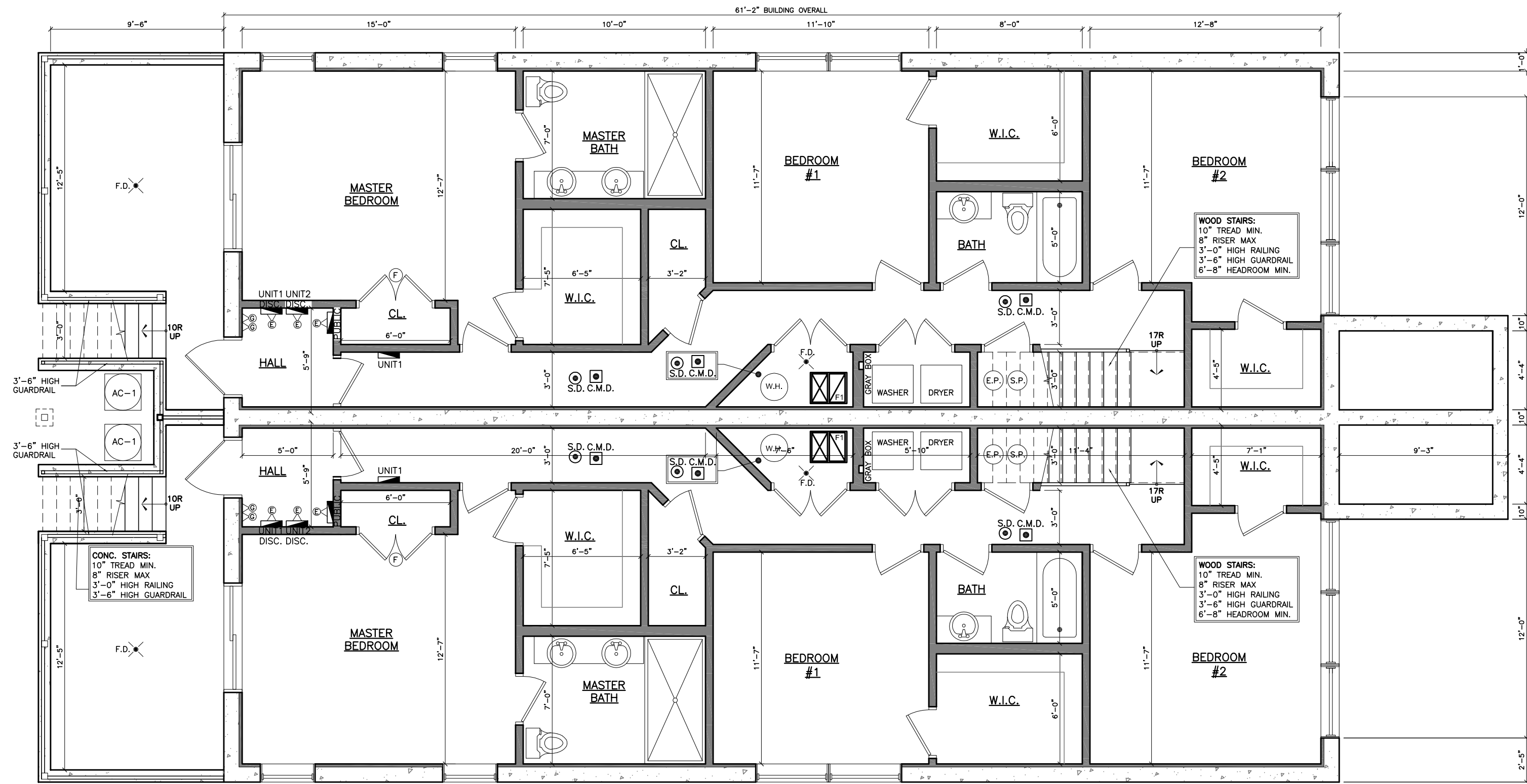
PROJECT: 1621-27N.CAMPBELL  
SCALE: 1/8" = 1'-0"  
DATE: 08-25-15

SHEET:

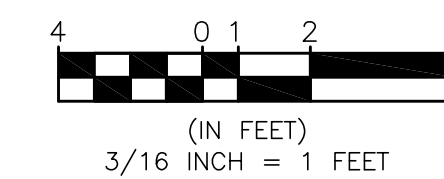
**A1**



FIRST FLOOR PLAN  
SCALE: 3/16"=1'-0"



BASEMENT PLAN  
SCALE: 3/16"=1'-0"



REVISIONS:  
CHECKED BY: F.E.K.  
DRAWN BY: RV

PROPOSED FLOOR PLANS

1621-27 N. CAMPBELL  
CHICAGO, IL

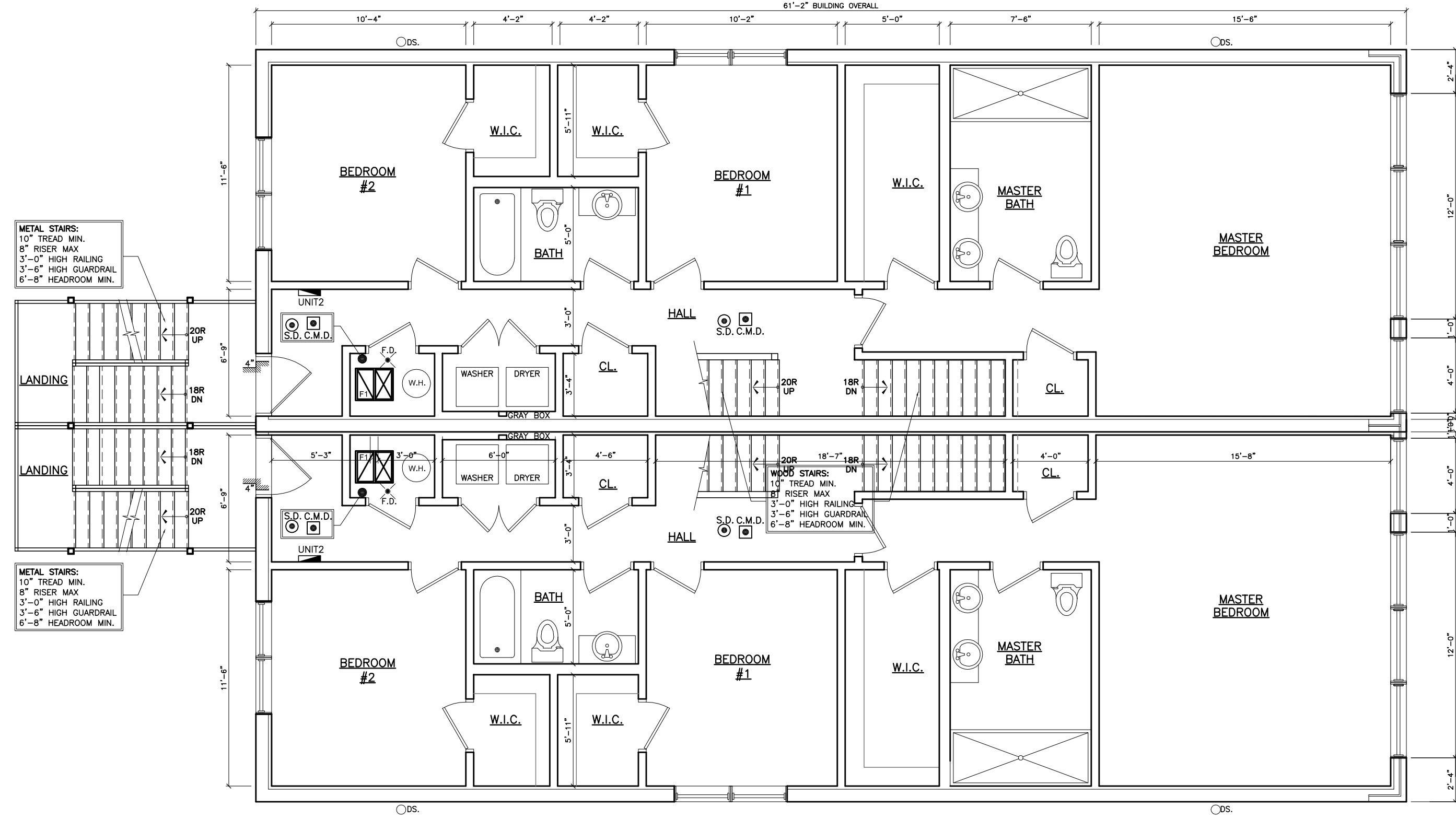
929 N. Damen Ave.  
Chicago IL 60622  
773.772.2756 office  
773.772.2884 fax

ARCHITECTURE  
ARCHITECTURAL ENGINEERING  
PLANNING  
**RECTS**  
**ARCHIT**

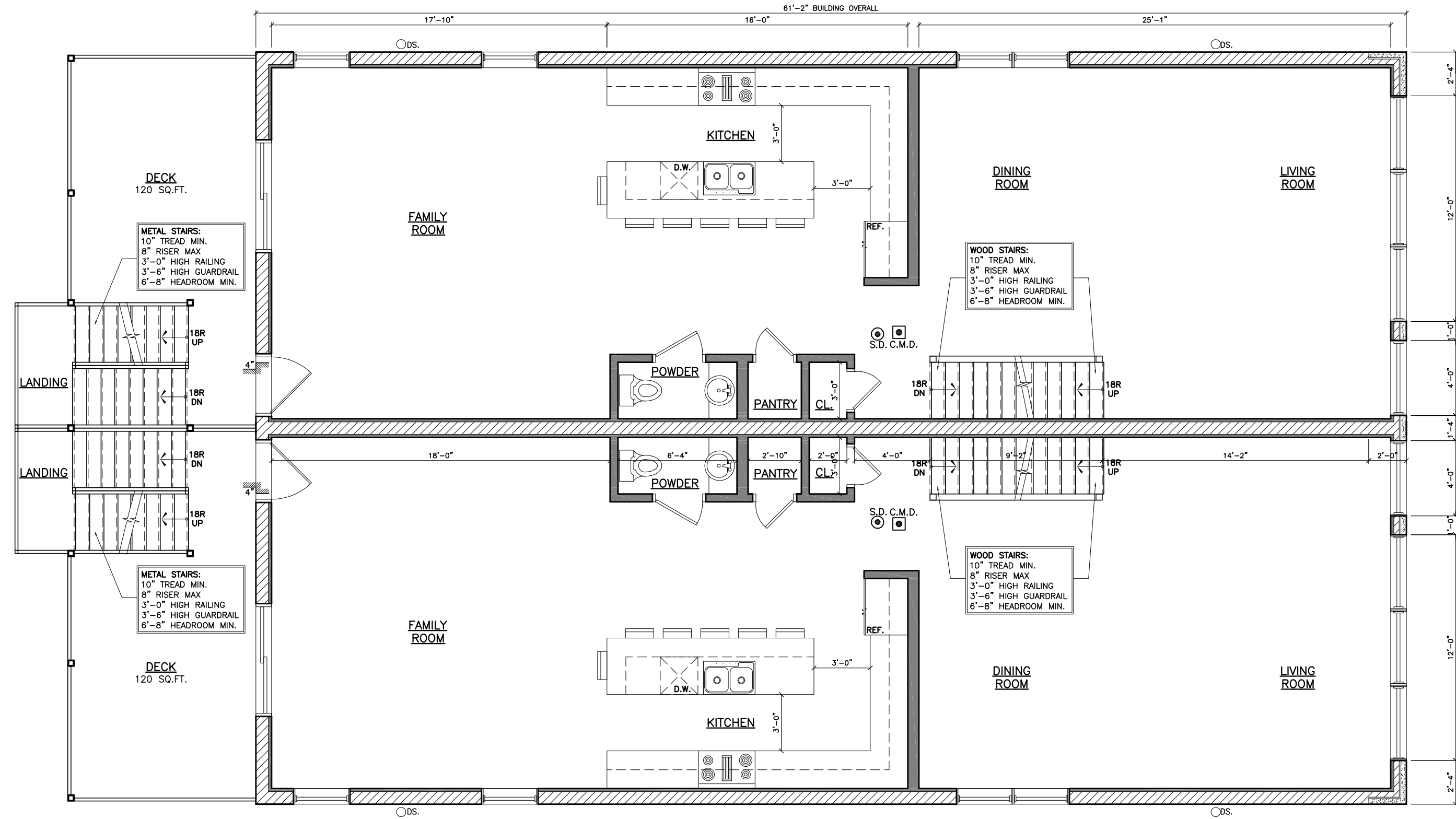
PROJECT:  
1621-27N.CAMPBELL  
SCALE:  
3/16" = 1'-0"  
DATE:  
08-25-15

SHEET:

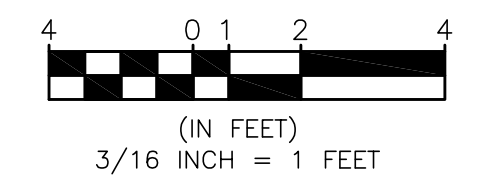
**A2**



THIRD FLOOR PLAN  
SCALE: 3/16"=1'-0"



SECOND FLOOR PLAN  
SCALE: 3/16"=1'-0"



REVISIONS:  
CHECKED BY: F.E.K.  
DRAWN BY: RV

PROPOSED FLOOR PLANS

1621-27 N. CAMPBELL  
CHICAGO, IL

929 N. Damen Ave.  
Chicago IL 60622  
773.772.2756 office  
773.772.2884 fax

ARCHITECTURE  
PLANNING  
ARCHITECTURAL ENGINEERING

**RECTS**  
**ARCHITECT**

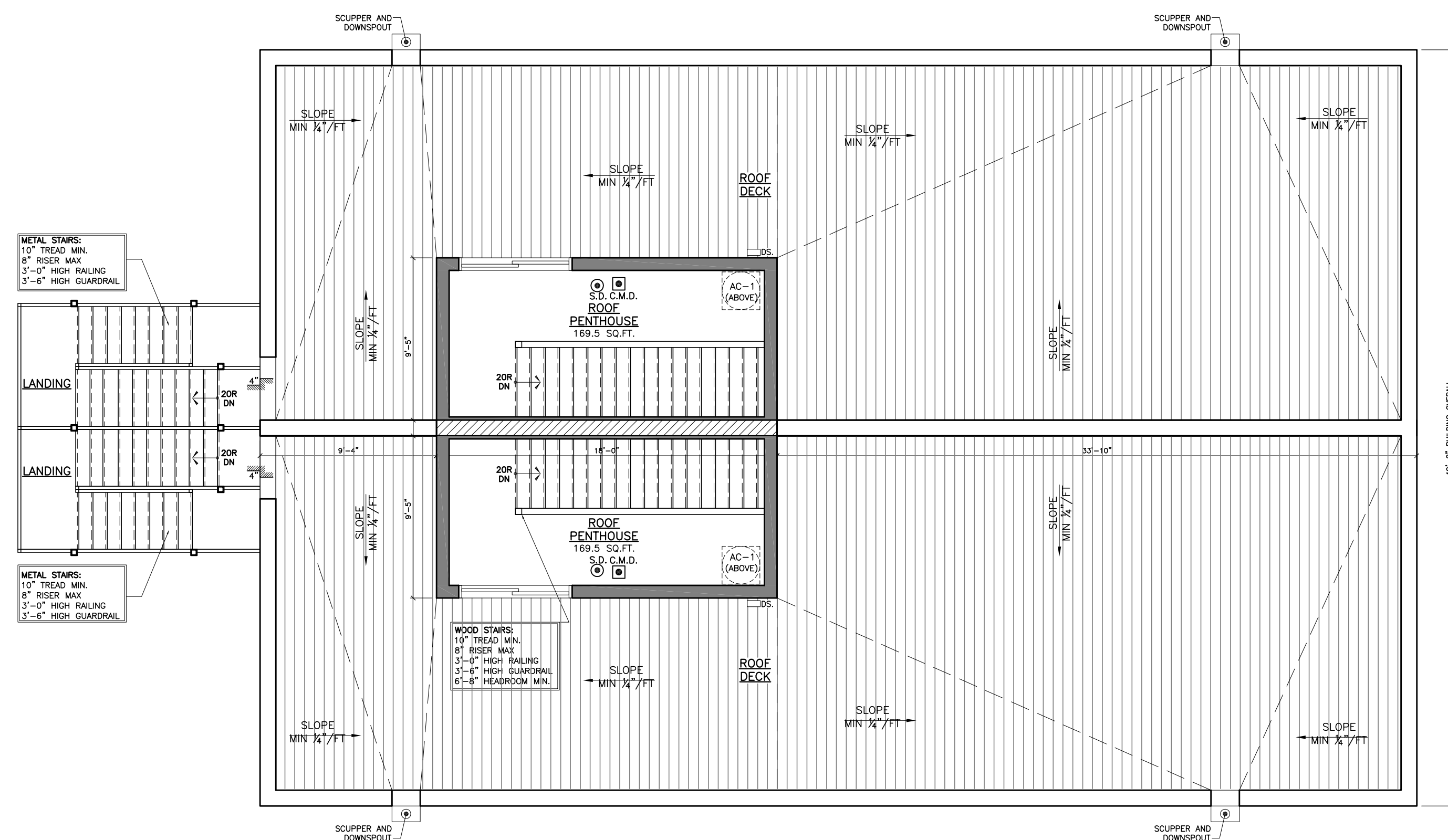
PROJECT:  
1621-27N.CAMPBELL

SCALE:  
3/16" = 1'-0"

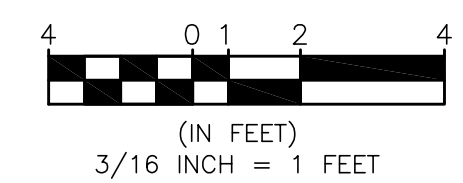
DATE:  
08-25-15

SHEET:

**A3**



ROOF PLAN  
SCALE: 3/16"=1'-0"



REVISIONS:  
CHECKED BY: F.E.K.  
DRAWN BY: RV

PROPOSED FLOOR PLAN

1621-27 N. CAMPBELL CHICAGO, IL

929 N. Damen Ave.  
Chicago IL 60622  
773.772.2756 office  
773.772.2884 fax

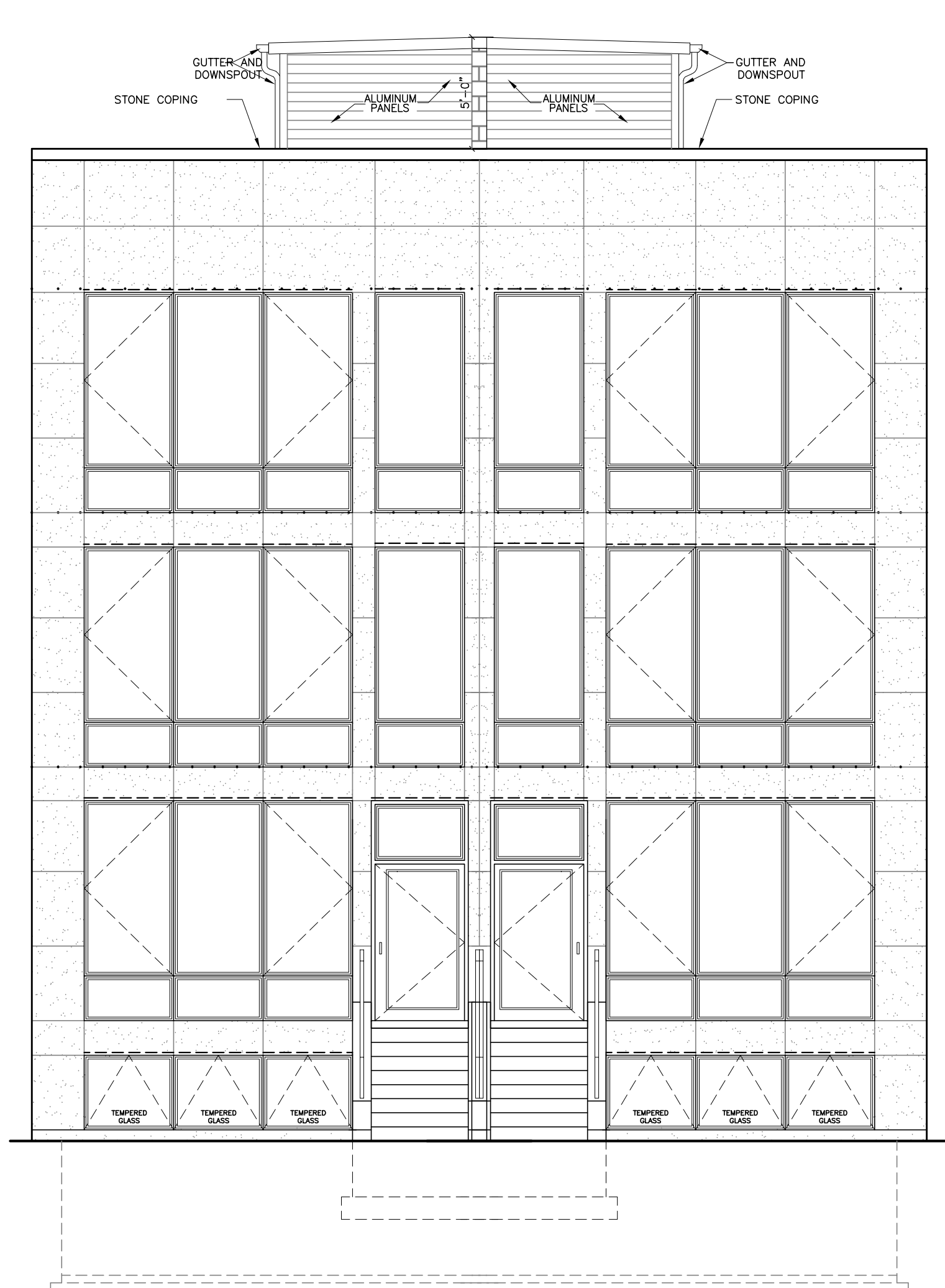
ARCHITECTURE  
PLANNING  
ARCHITECTURAL ENGINEERING

**RECTS**  
**ARCHITECT**

PROJECT:  
1621-27N.CAMPBELL  
SCALE:  
3/16" = 1'-0"  
DATE:  
08-25-15

SHEET:  
**A4**  
4 OF 7

- 1/ ROOFTOP STAIR ENCLOSURE HIGH POINT EL: +49'-4"
- 1/ PARAPET EL: +44'-4"
- 1/ ROOF DECK EL: +40'-10"
- 1/ BUILDING 3rd. FLOOR CLNG. EL: +38'-0"
- THIRD FLOOR EL: +28'-0"
- SECOND FLOOR EL: +18'-9"
- FIRST FLOOR EL: +5'-4"
- 1/ CONC. STAIR PORCH EL: +5'-0"
- GRADE EL: +0'-0"
- BASEMENT EL: -6'-0"

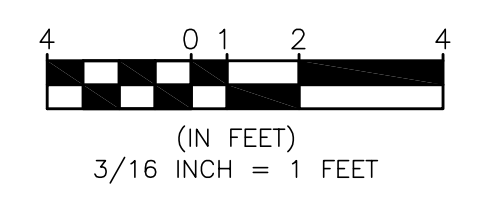


PROPOSED EAST ELEVATION 1  
SCALE: 3/16"=1'-0"

- 1/ ROOFTOP STAIR ENCLOSURE HIGH POINT EL: +49'-4"
- 1/ PARAPET EL: +44'-4"
- 1/ ROOF DECK EL: +40'-10"
- 1/ BUILDING 3rd. FLOOR CLNG. EL: +38'-0"
- THIRD FLOOR EL: +28'-0"
- SECOND FLOOR EL: +16'-9"
- FIRST FLOOR EL: +5'-4"
- 1/ CONC. STAIR EL: +5'-0"
- GRADE EL: +0'-0"
- BASEMENT EL: -6'-0"



NORTH ELEVATION 2  
SCALE: 3/16"=1'-0"



REVISIONS:  
CHECKED BY: F.E.K.  
DRAWN BY: RV

PROPOSED ELEVATIONS

1621-27 N. CAMPBELL CHICAGO, IL

929 N. Damen Ave. Chicago IL 60622  
773.772.2756 office  
773.772.2884 fax

ARCHITECTURE ARCHITECTURAL ENGINEERING  
PLANNING  
**RECTS ARCHITECT**

PROJECT: 1621-27N.CAMPBELL  
SCALE: 3/16" = 1'-0"  
DATE: 08-25-15

SHEET:

**A5**

REVISIONS:  
 CHECKED BY: F.E.K.  
 DRAWN BY: RV

PROPOSED  
 ELEVATIONS

1621-27 N. CAMPBELL  
 CHICAGO, IL

929 N. Damen Ave.  
 Chicago IL 60622  
 773.772.2756 office  
 773.772.2884 fax

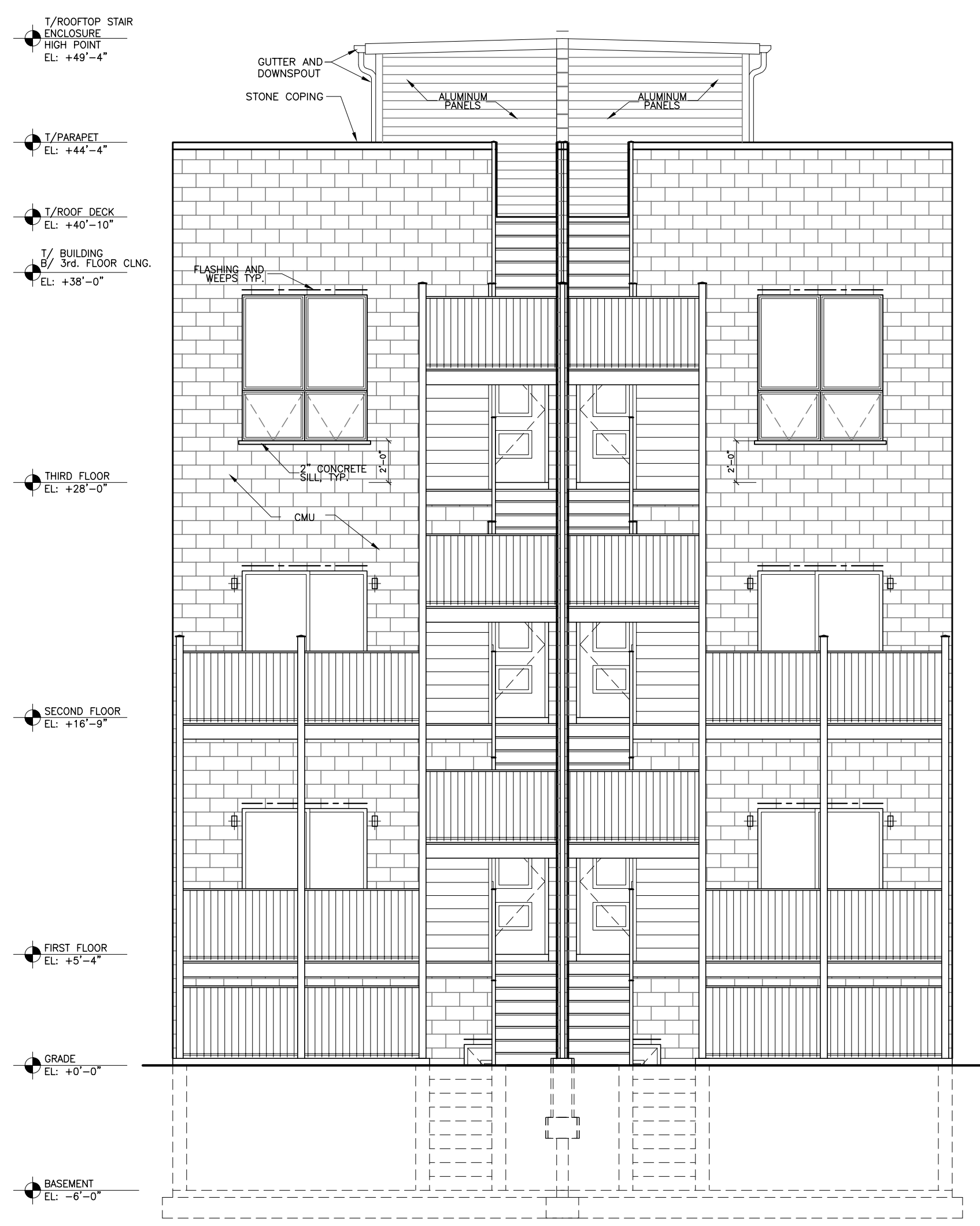


ARCHITECTURE  
 PLANNING  
 ARCHITECTURAL ENGINEERING

PROJECT:  
 1621-27N.CAMPBELL  
 SCALE:  
 3/16" = 1'-0"  
 DATE:  
 08-25-15

SHEET:

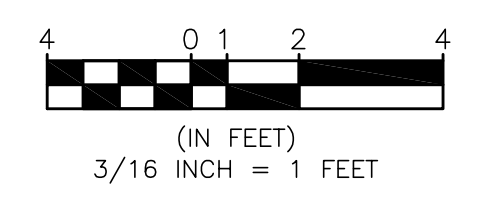
A6

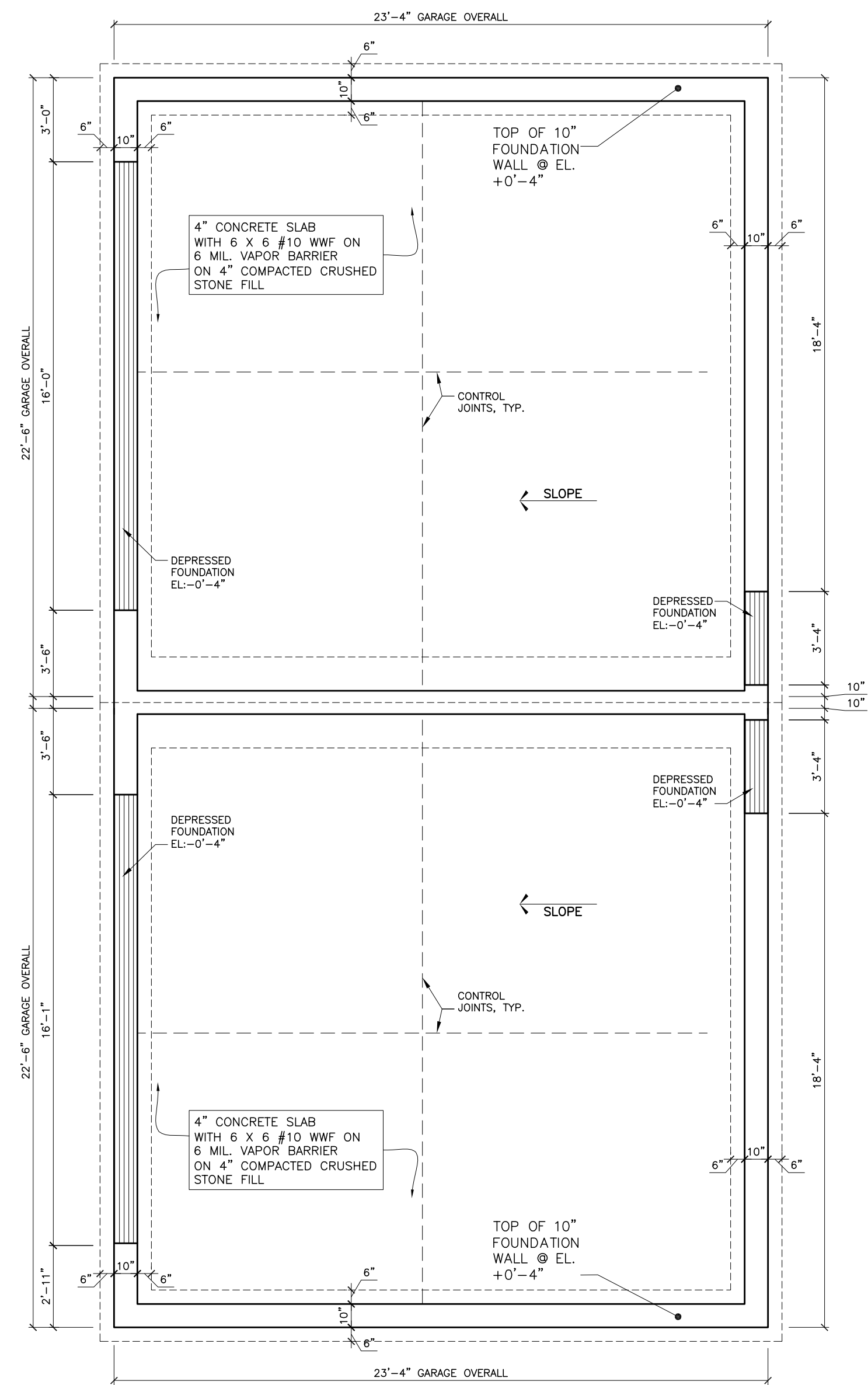


WEST ELEVATION  
 SCALE: 3/16"=1'-0" 3

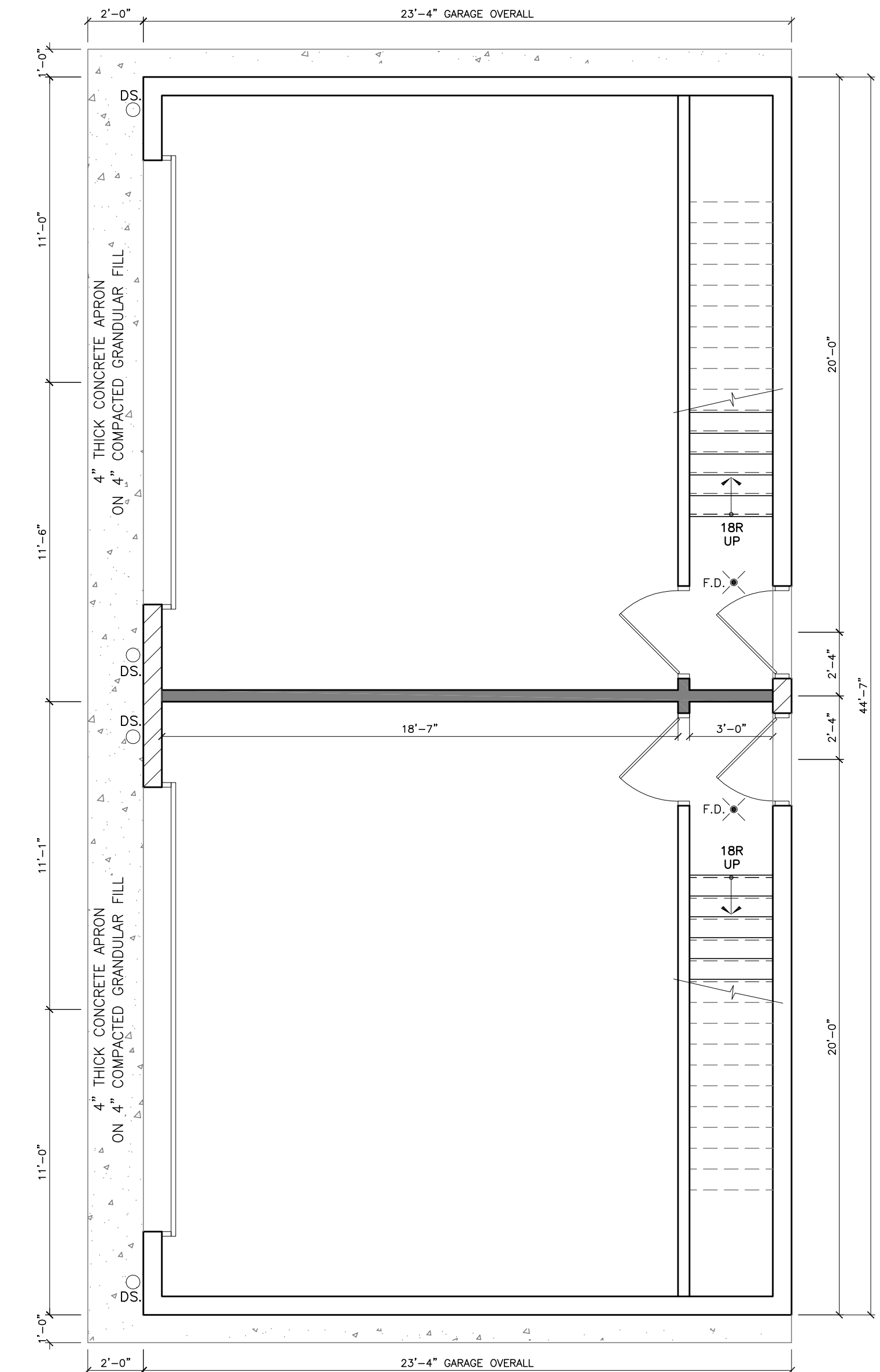


SOUTH ELEVATION  
 SCALE: 3/16"=1'-0" 4

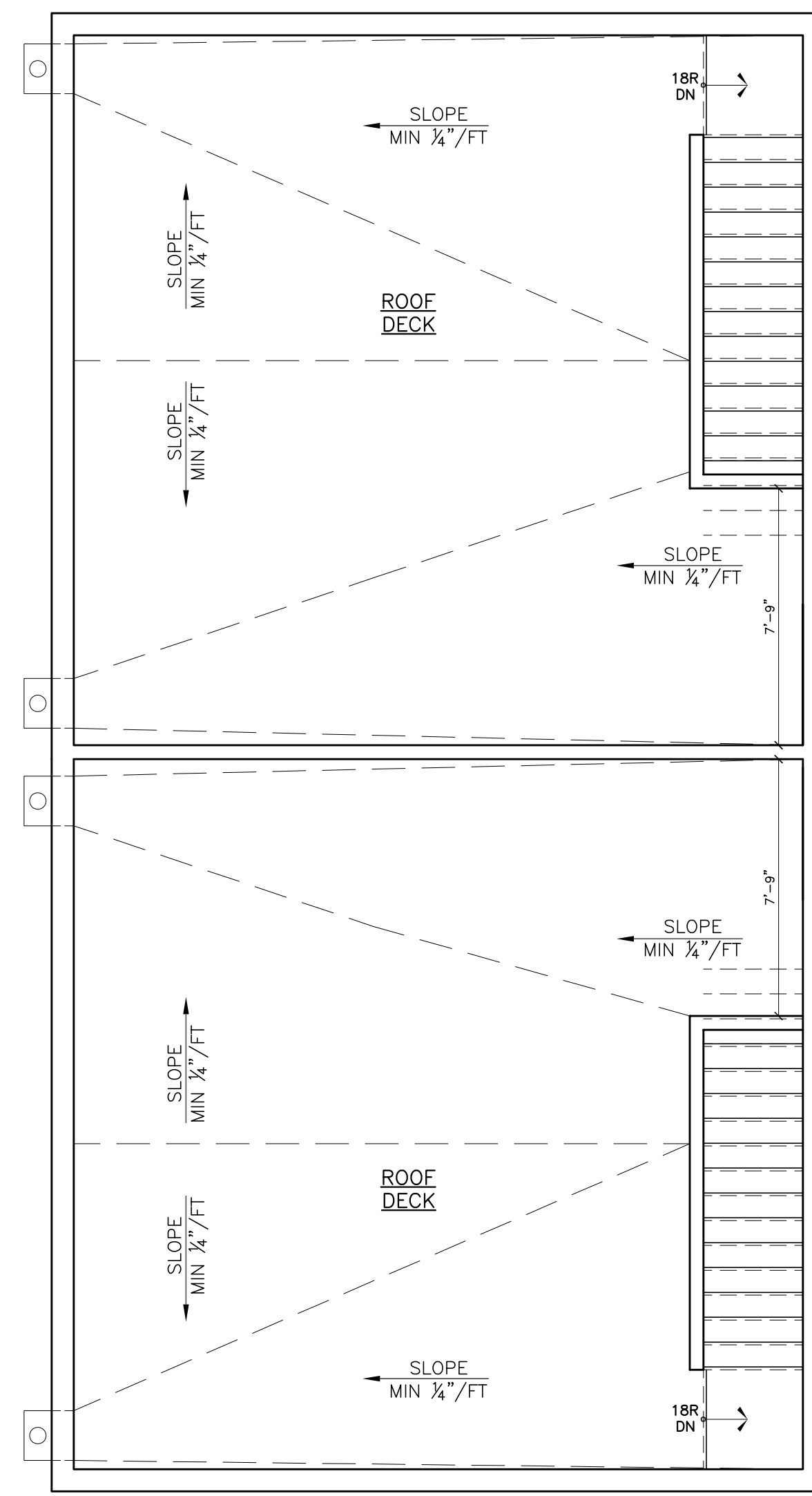




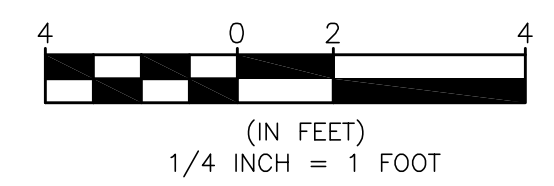
GARAGE FOUNDATION PLAN  
SCALE: 1/4"=1'-0"



GARAGE FLOOR PLAN  
SCALE: 1/4"=1'-0"



GARAGE ROOF PLAN  
SCALE: 1/4"=1'-0"



REVISIONS:  
CHECKED BY: F.E.K.  
DRAWN BY: RV

PROPOSED  
GARAGE PLANS

1621-27 N. CAMPBELL  
CHICAGO, IL

929 N. Damen Ave.  
Chicago IL 60622  
773.772.2756 office  
773.772.2884 fax

ARCHITECTURE  
**RECTS**  
ARCHITECTURAL ENGINEERING  
PLANNING

PROJECT:  
1621-27N.CAMPBELL  
SCALE:  
1/4" = 1'-0"  
DATE:  
08-25-15

SHEET:

**A7**